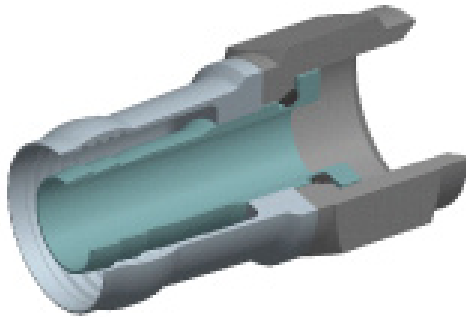


www.icmcorp.net

The DB6PL2 is our Plenum "F" type connector that fits most RG6 Plenum coaxial cable.



CPLCRBC-B
Utilize This Tool

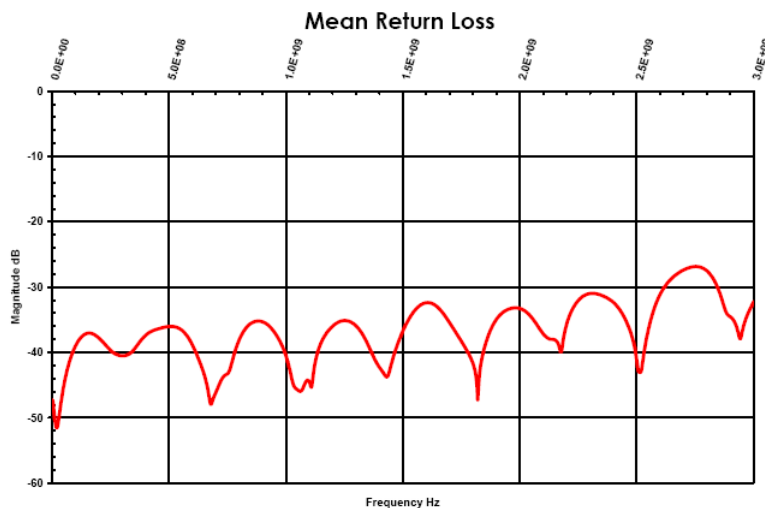


Specifications:

- 75 Ohm Construction
- DC-1 GHz > 31 dB Return Loss < 1.05 VSWR
- DC-2 GHz > 26 dB Return Loss < 1.09 VSWR
- DC-3 GHz > 21 dB Return Loss < 1.18 VSWR
- Cable Pullout Force Exceeding 65 in/lbs.
- Body Material Brass
- Body Material (Plating) Nickel

Coax Sizing (inches)	Min ~ Max
Center	.0399 ~ .0418
Dielectric	.165 ~ .172
Outer Jacket	.220 ~ .250

Coax Sizing (mm)	Min ~ Max
Center	1.01 ~ 1.06
Dielectric	4.19 ~ 4.37
Outer Jacket	5.59 ~ 6.35



Frequency (Hz)	dB
5 MHz	-40.4 dB
15 MHz	-39.9 dB
550 MHz	-42.1 dB
750 MHz	-39.4 dB
1000 MHz	-34.1 dB
2000 MHz	-31.8 dB
3000 MHz	-24.1 dB

Lower return loss (dB) equates to less reflection through the connector while maintaining signal strength